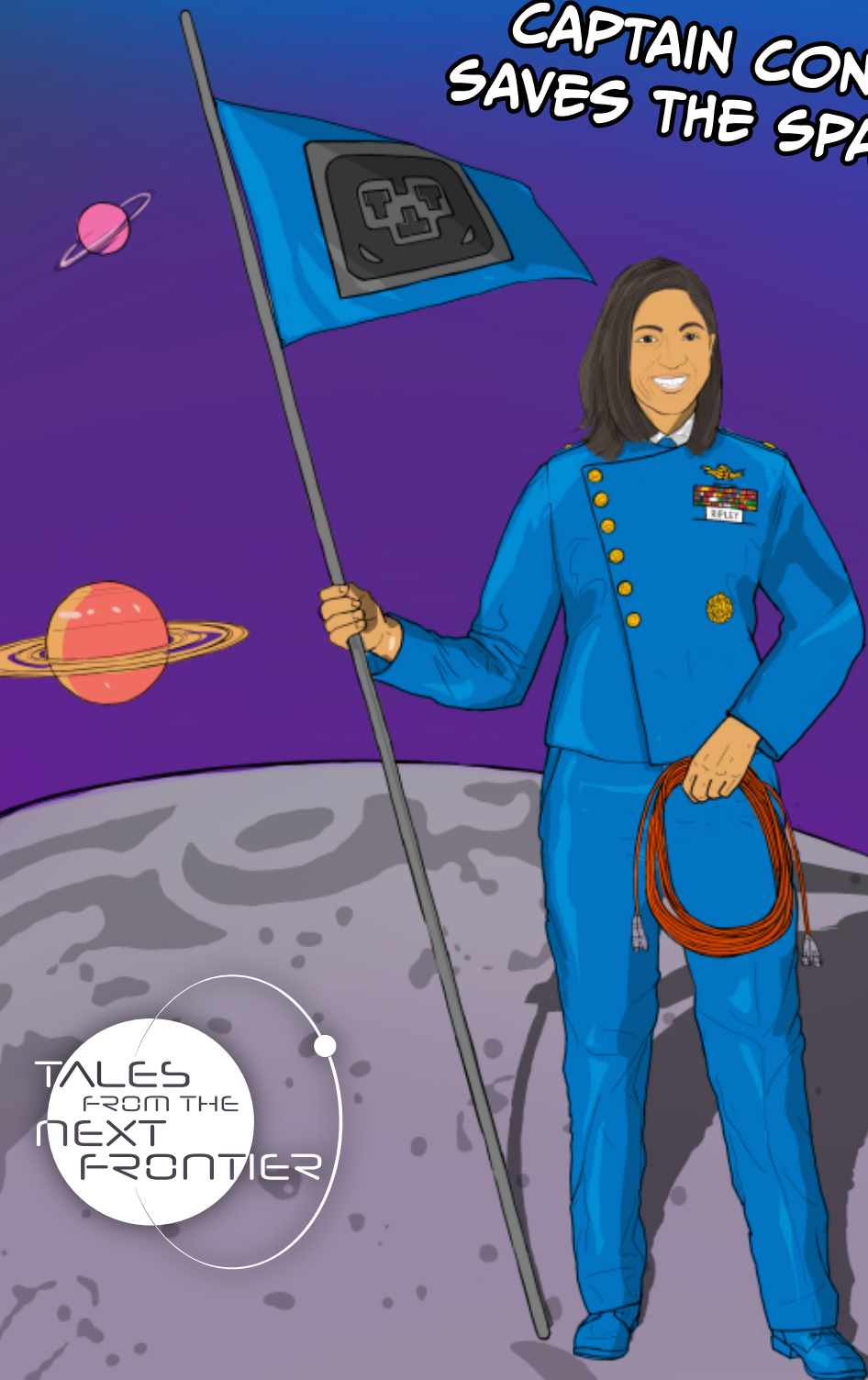


AN EDUCATION I.T. TALE

I.T. HEROES

CAPTAIN CONNECTIVITY
SAVES THE SPACE ACADEMY

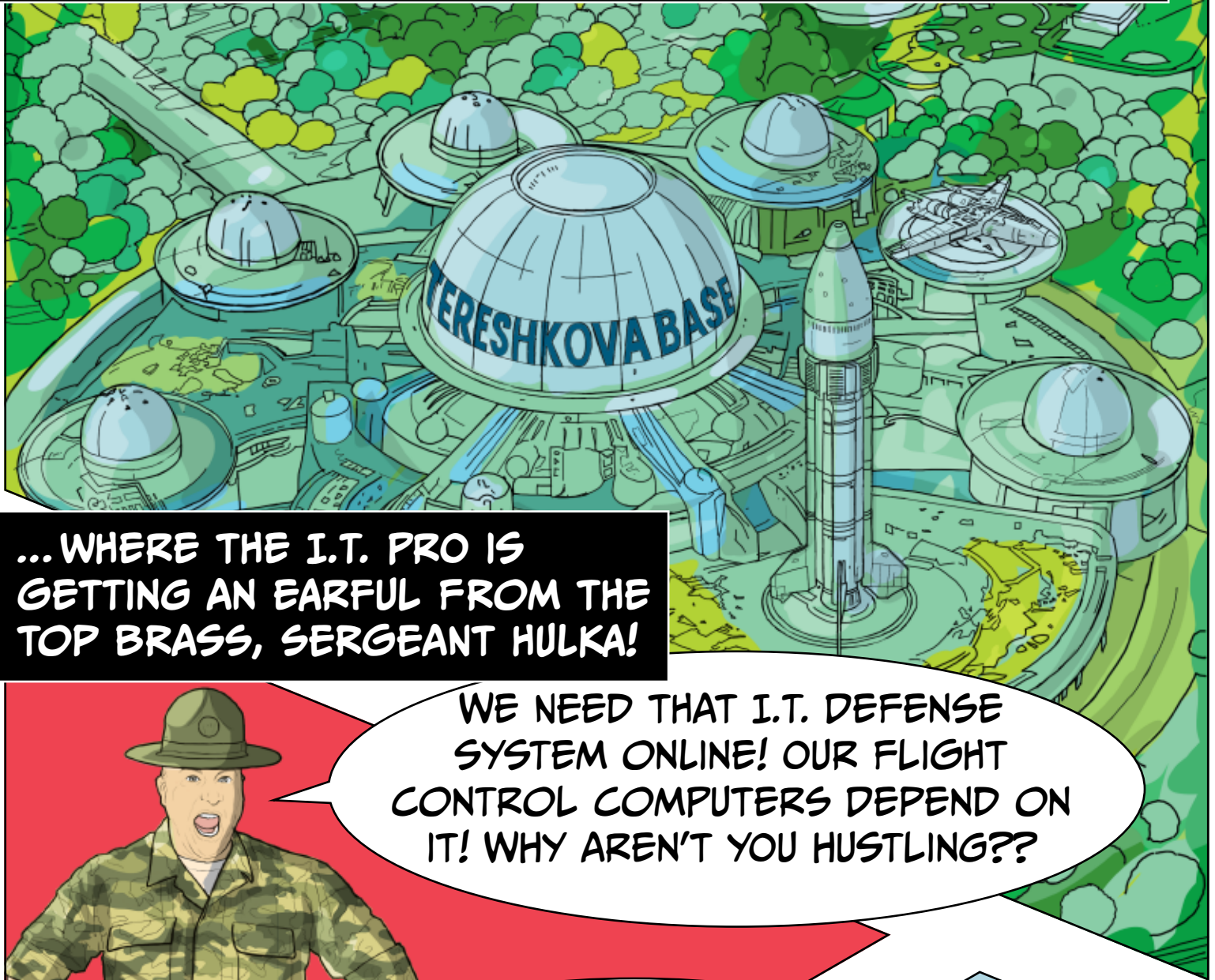


TALES
FROM THE
NEXT
FRONTIER

EAT•N

Powering Business Worldwide

THE SPACE ACADEMY, A LUNAR TRAINING FACILITY FOR THE NEXT GENERATION OF STARFLEET COMMANDERS...



...WHERE THE I.T. PRO IS GETTING AN EARFUL FROM THE TOP BRASS, SERGEANT HULKA!



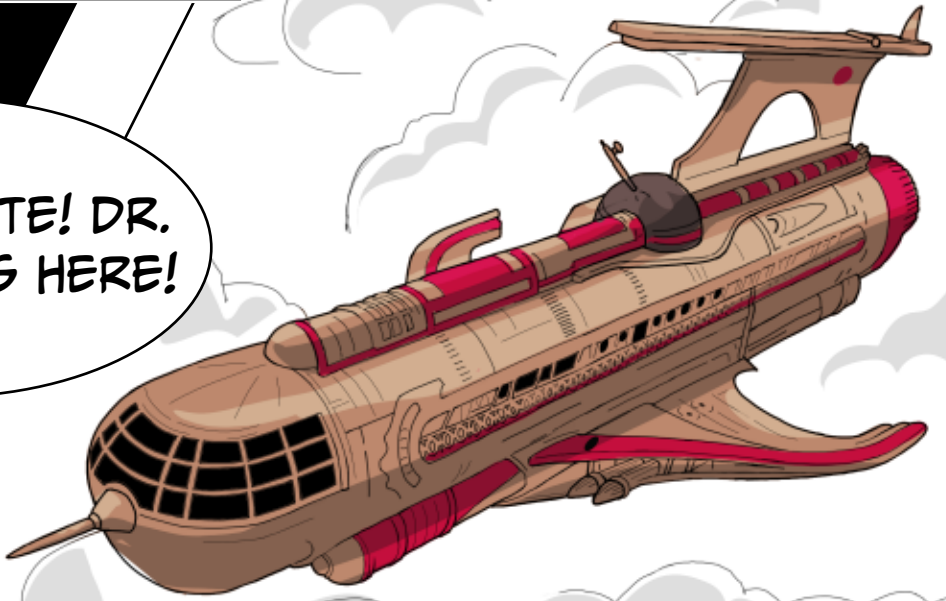
WE NEED THAT I.T. DEFENSE SYSTEM ONLINE! OUR FLIGHT CONTROL COMPUTERS DEPEND ON IT! WHY AREN'T YOU HUSTLING??

C'MON, CHIEF. WORK SMARTER, NOT HARDER.

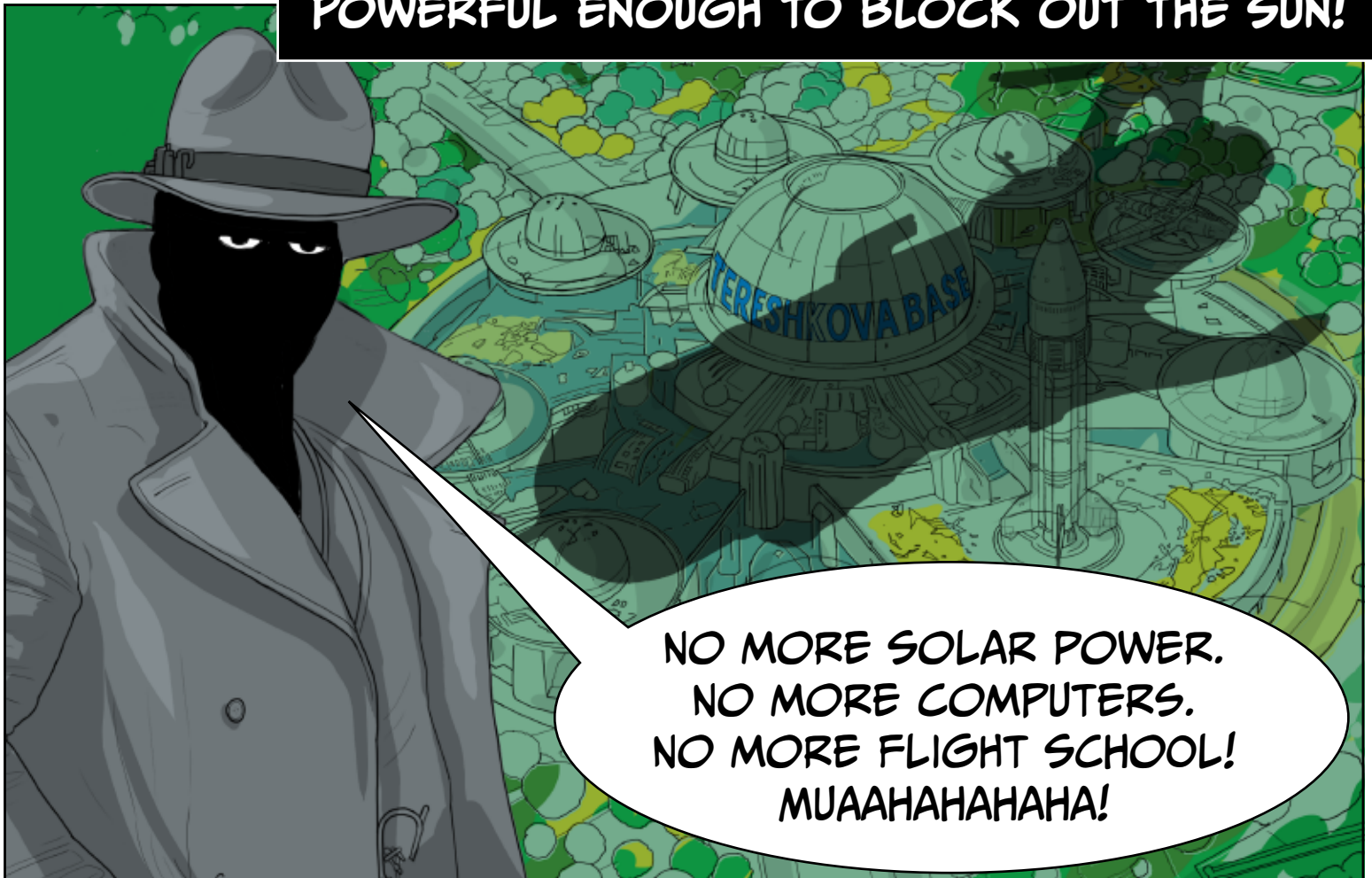


**SUDDENLY, THE ACADEMY IS
PLUNGED INTO DARKNESS.**

**IT'S TOO LATE! DR.
DOWNTIME IS HERE!**



**BEHOLD: THE ECLIPSINATOR! THE MOBILE
SPACE STATION OF THE EVIL DR. DOWNTIME.
POWERFUL ENOUGH TO BLOCK OUT THE SUN!**



**NO MORE SOLAR POWER.
NO MORE COMPUTERS.
NO MORE FLIGHT SCHOOL!
MUAHAHAHAHA!**

BUT THEN...

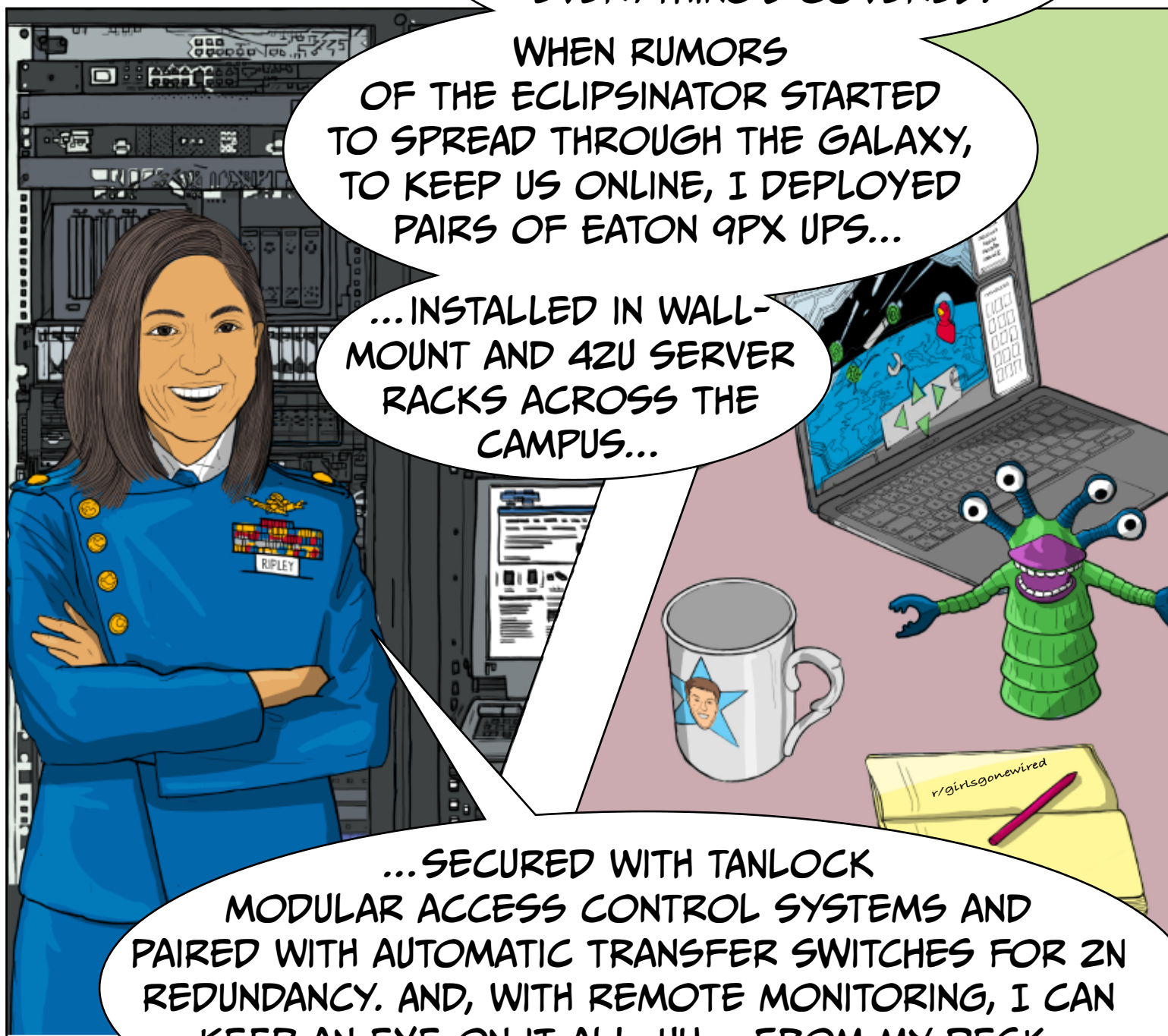
BUT... I DON'T UNDERSTAND...
WHY DO WE STILL HAVE POWER?

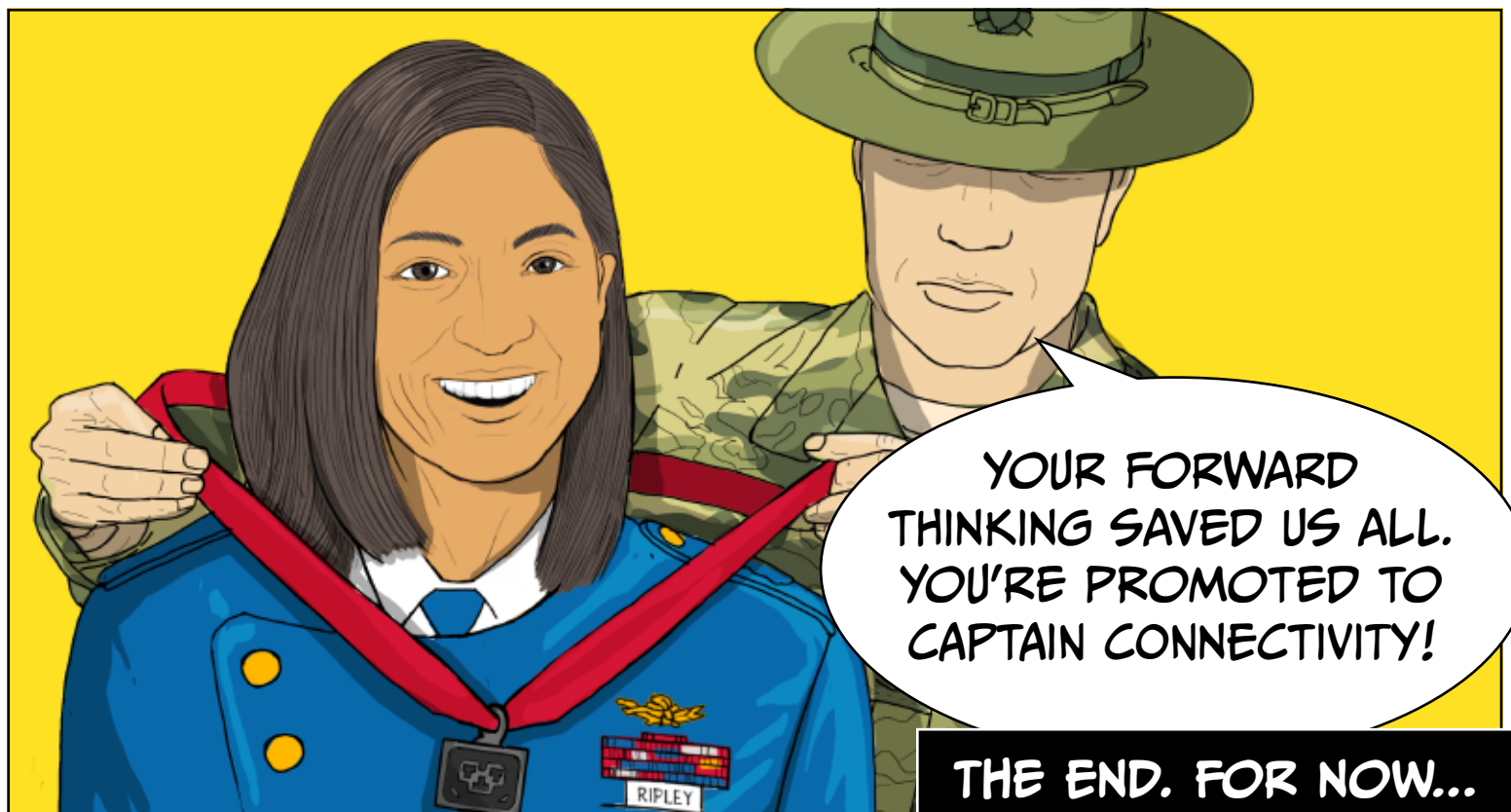
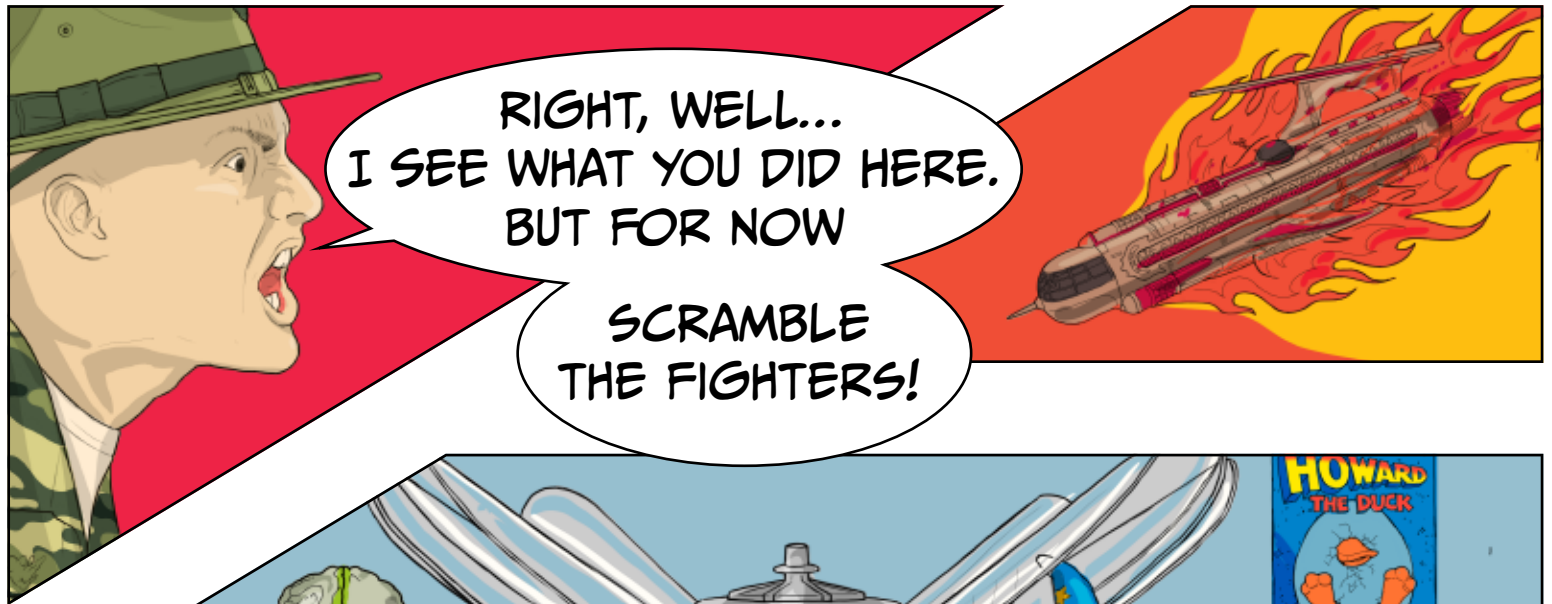
I TRIED TO TELL YOU, SIR -
EVERYTHING'S COVERED.

WHEN RUMORS
OF THE ECLIPSINATOR STARTED
TO SPREAD THROUGH THE GALAXY,
TO KEEP US ONLINE, I DEPLOYED
PAIRS OF EATON 9PX UPS...

...INSTALLED IN WALL-
MOUNT AND 42U SERVER
RACKS ACROSS THE
CAMPUS...

...SECURED WITH TANLOCK
MODULAR ACCESS CONTROL SYSTEMS AND
PAIRED WITH AUTOMATIC TRANSFER SWITCHES FOR 2N
REDUNDANCY. AND, WITH REMOTE MONITORING, I CAN
KEEP AN EYE ON IT ALL, UH... FROM MY DESK.





CAPTAIN CONNECTIVITY CONTINUED TO IMPROVE THE FLIGHT ACADEMY DEFENSE SYSTEM, UPDATING ITS UPS NETWORK CARD, AND INSTALLING NIAP-CERTIFIED SECURE KVM SWITCHES TO TURN HER DESK INTO THE ULTIMATE COMMAND MODULE.

NEVER AGAIN WAS SHE TOLD TO WORK HARDER.



TO DEFEAT DR. DOWNTIME, OUR I.T. HERO:

- DEPLOYED EATON 9PX UPS PAIRS WITH AUTOMATIC TRANSFER SWITCHES FOR REDUNDANCY
- UTILIZED SERVER RACKS AND CABINETS WITH TANLOCK MODULAR ACCESS CONTROL
- MONITORED THE SITUATION IN REAL-TIME WITH BRIGHTLAYER DATA CENTERS SUITE

READY TO BE THE HERO OF YOUR OWN I.T. TALE? SEE WHAT YOU CAN ACHIEVE WITH OUR SOLUTIONS FOR EDUCATION I.T.